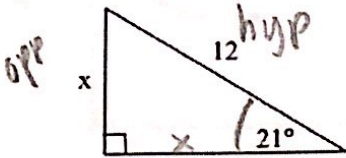


Day 4: Solving Using Trig

Solve for the missing side or angle.

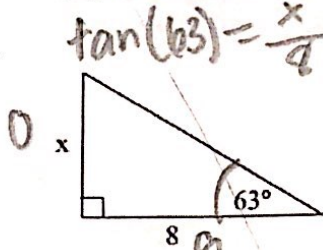
1



$$\sin 21 = \frac{x}{12}$$

$$x = \underline{4.3}$$

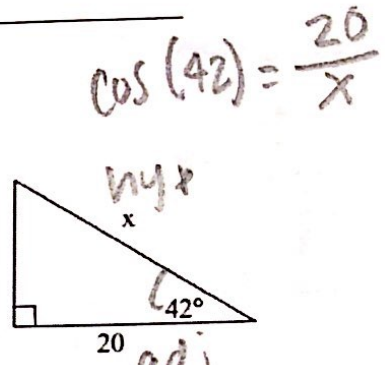
2.



$$\tan(63) = \frac{x}{8}$$

$$x = \underline{15.7}$$

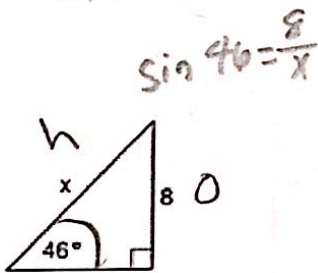
3.



$$\cos(42) = \frac{20}{x}$$

$$x = \underline{26.91}$$

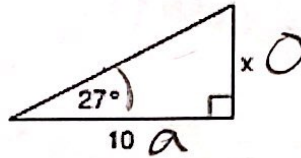
4.



$$\sin 46 = \frac{8}{x}$$

$$x = \underline{11.12}$$

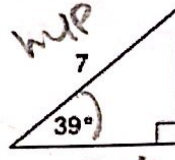
5.



$$\tan(27) = \frac{x}{10}$$

$$x = \underline{5.10}$$

6.

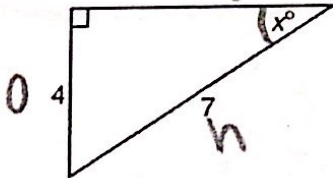


$$\cos(39) = \frac{x}{7}$$

$$x = \underline{5.44}$$

7.

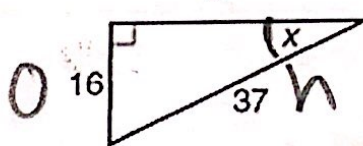
$$\sin(x) = \frac{4}{7}$$



$$x = \underline{34.85}$$

8.

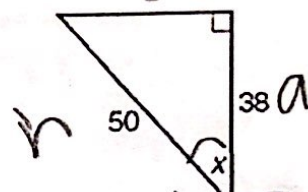
$$\sin(x) = \frac{16}{37}$$



$$x = \underline{25.62}$$

9.

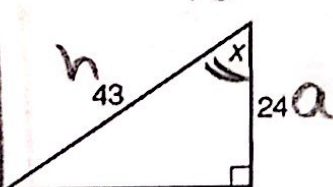
$$\cos(x) = \frac{38}{50}$$



$$x = \underline{40.54}$$

10.

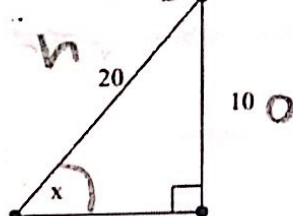
$$\cos(x) = \frac{24}{43}$$



$$x = \underline{56.07}$$

11.

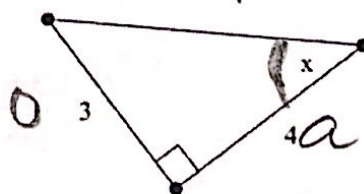
$$\sin(x) = \frac{10}{20}$$



$$x = \underline{30}$$

12.

$$\tan(x) = \frac{3}{4}$$



$$x = \underline{36.87}$$

SO
SIN CHA
COSA
CHTA