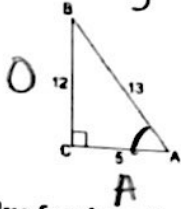


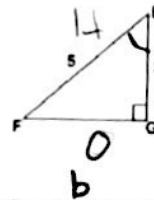
HW: Unit 5 Study Guide

Evaluate the following.

3. $\tan(A) = \frac{12}{5} = \boxed{67.38^\circ}$



5. $\sin(E) = \frac{4}{5} = \boxed{53.13^\circ}$
 $5^2 = 3^2 + b^2$
 $16 = b^2$
 $b = 4$



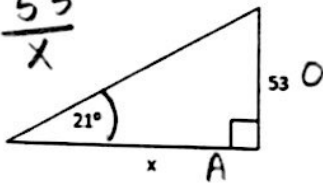
Solve for the value of the variable(s). Show your work on a separate sheet of paper.

6. $x = \underline{138.07}$

7. $x = \underline{108.003}$

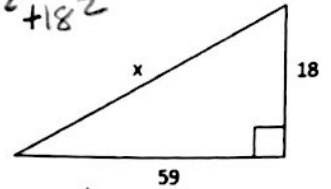
8. $x = \underline{61.48}$

$\tan(21) = \frac{53}{x}$



$\sin(59) = \frac{x}{126}$

$x^2 = 59^2 + 18^2$

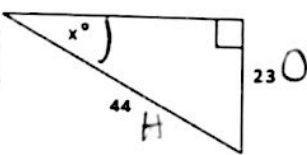


9. $x = \underline{31.52}$

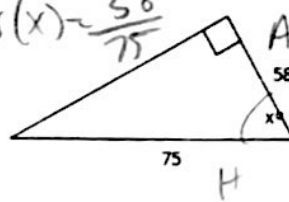
10. $x = \underline{39.35}$

11. $x = \underline{41.19}$

$\sin(x) = \frac{23}{44}$



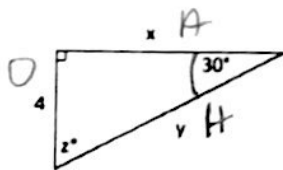
$\cos(x) = \frac{58}{75}$



$\tan(x) = \frac{7}{8}$

12. $x = \underline{6.93}$, $y = \underline{8}$, $z = \underline{60}$
 Perimeter (to the nearest whole) = 19

13. Perimeter (to the nearest whole) = 56



$\tan(30) = \frac{4}{x}$

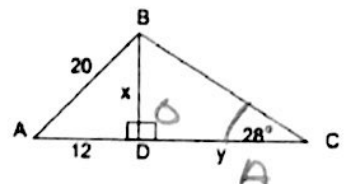
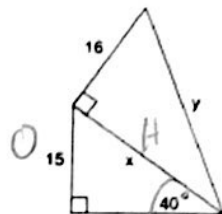
$\sin(30) = \frac{4}{y}$

$\tan(74) = \frac{24}{A}$
 $\sin(74) = \frac{24}{H}$
 $H = 24.97$
 $A = 6.88$



14. $x = \underline{23.34}$
 $y = \underline{28.29}$

15. $x = \underline{16}$
 $y = \underline{30.09}$



$\sin(40) = \frac{15}{x}$

$20^2 = 12^2 + x^2$

$16^2 + 23.34^2 = y^2$

$\tan(28) = \frac{16}{y}$