

Part 4: Match each equation to its graph below.

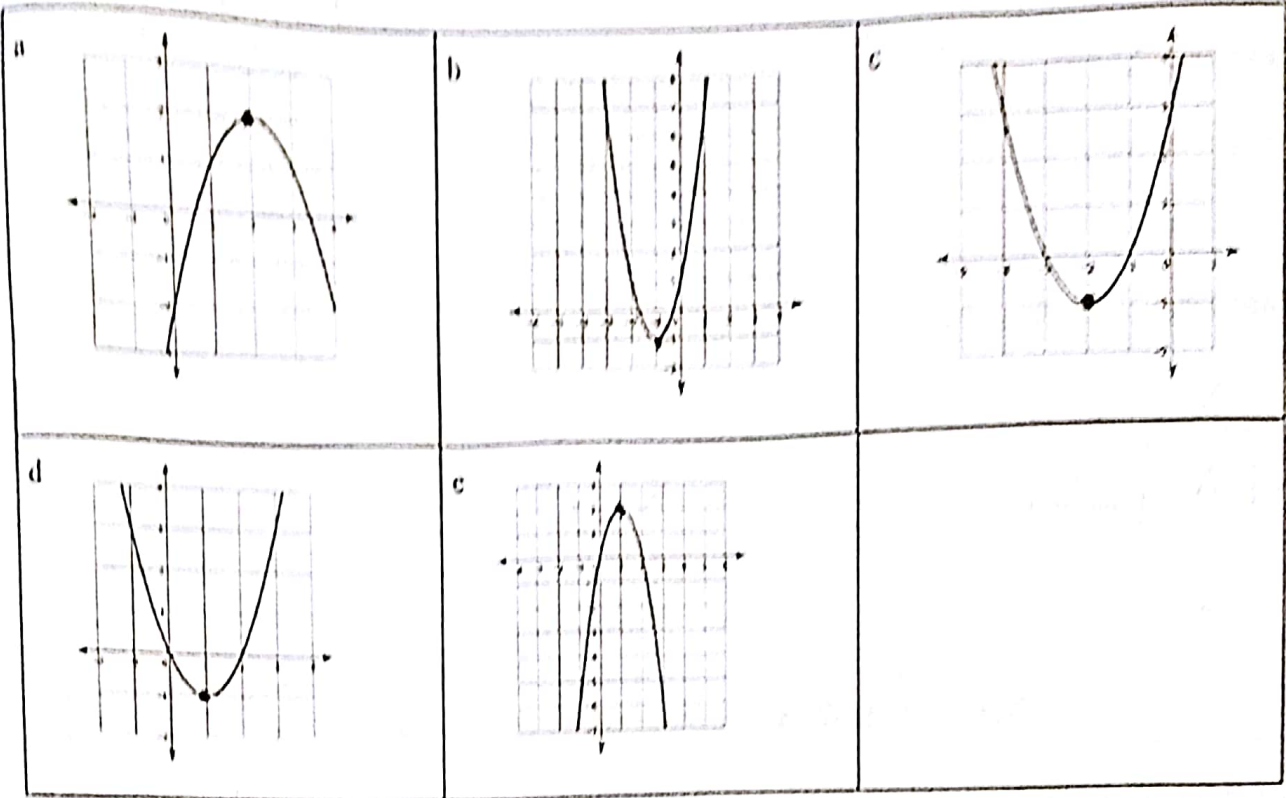
C 18. $y = (x + 2)^2 - 1$

D 20. $y = 2(x + 1)^2 - 1$

A 19. $y = -(x - 2)^2 + 2$

D 21. $y = (x - 1)^2 - 1$

E 22. $y = -2(x - 1)^2 + 2$



Day 3 Hw: Intercept form and Standard form

Part 1: Match each parabola with its graph below.

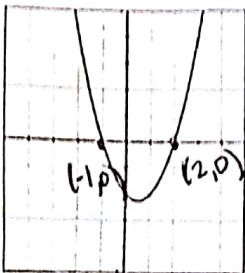
A 1) $y = (x + 1)(x - 2)$

A 3) $y = -(x + 1)(x + 2)$

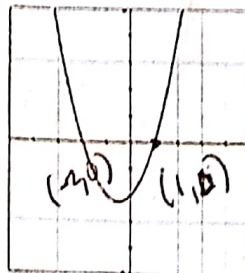
C 2) $y = -(x - 1)(x - 2)$

B 4) $y = (x + 2)(x - 1)$

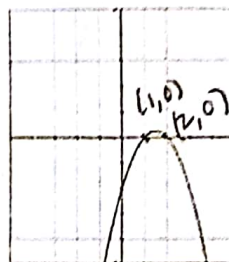
a.



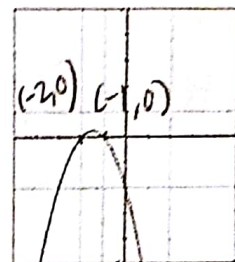
b.



c.



d.



Math 2 Honors

Unit 2A: Quadratic Transformations and Factoring

Name:

Part 2: Find the equivalent standard form equations for the intercept form equations below.

5) $y = (x+1)(x-2)$

	x	-2
x	x^2	$-2x$
$+1$	$+x$	-2

Standard form: $x^2 - x - 2 = y$

3) $y = -(x+1)(x+2)$

Standard form: $y = -x^2 - 3x - 2$

	$-x$	-1
x	$-x^2$	$-x$
$+2$	$-2x$	-2

2) $y = -(x-1)(x-2)$

	x	-2
$-x$	$-x^2$	$+2x$
$+1$	$+x$	-2

Standard form: $y = -x^2 + 3x - 2$

4) $y = (x+2)(x-1)$

Standard form: $x^2 - x - 2 = y$

	x	$+2$
x	x^2	$+2x$
-1	$-x$	-2